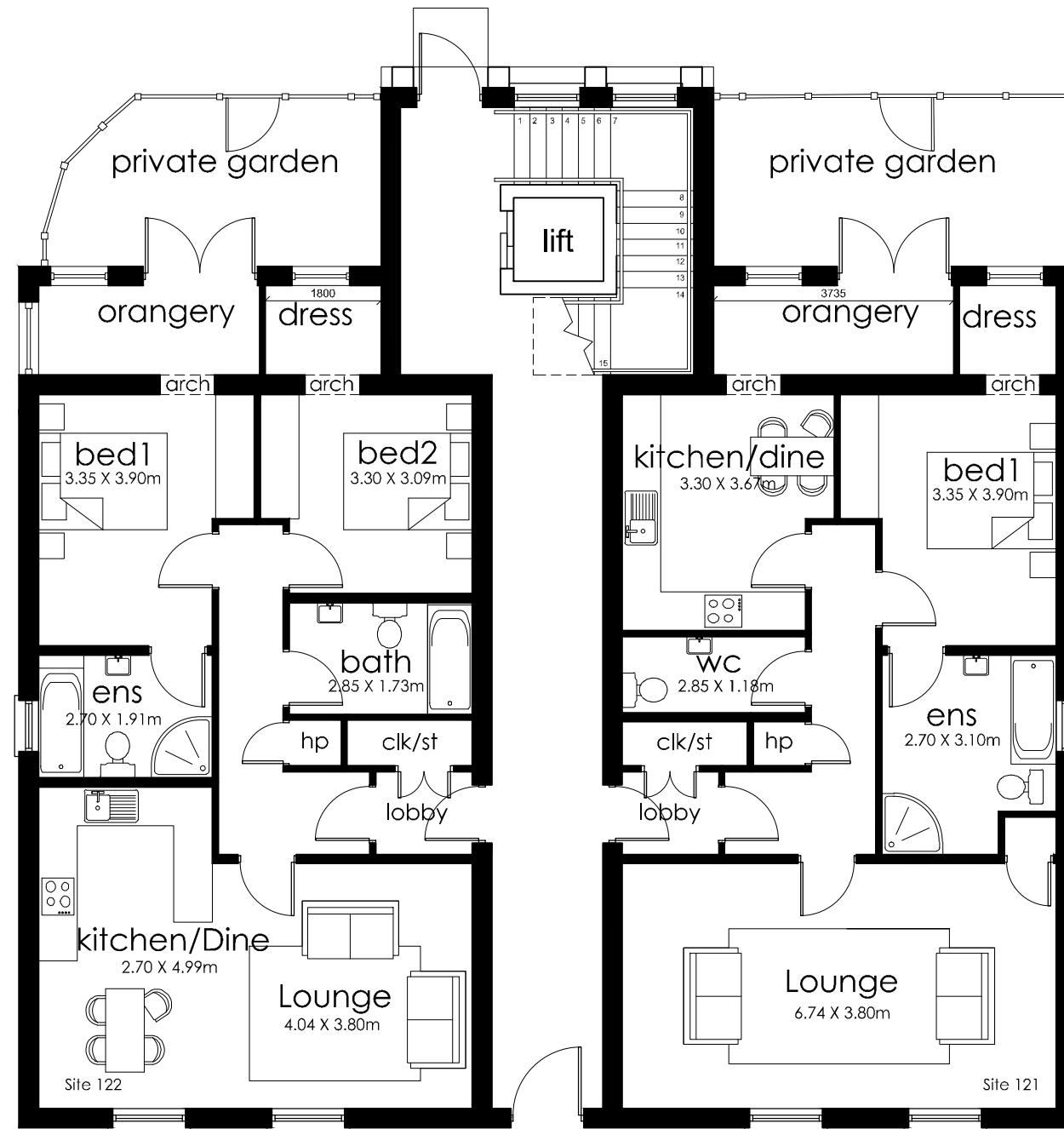


Pied a Terre Homes 121-126 Ballantine Garden Village Hillhall Road, Lisburn

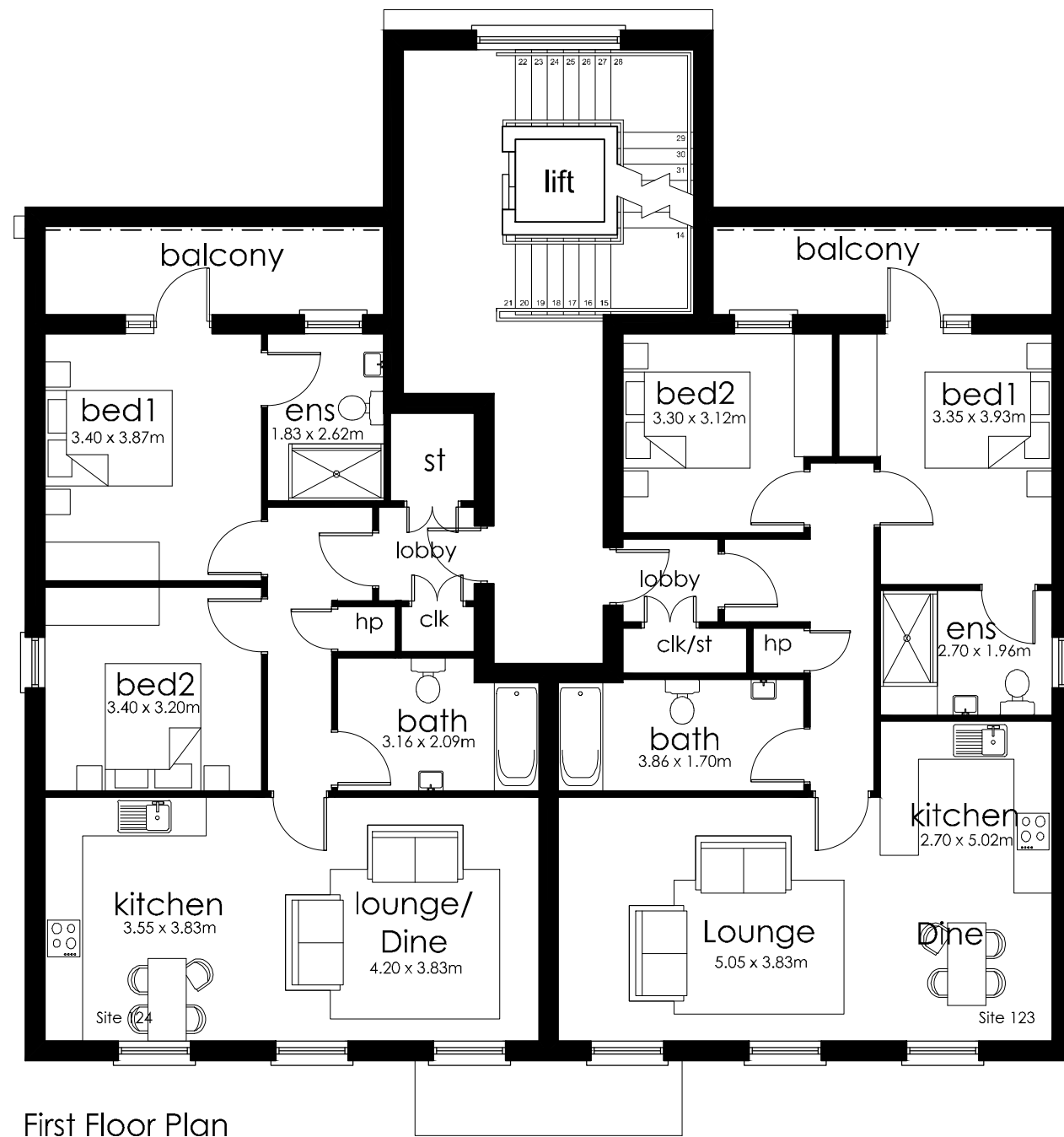




Ground floor plan

- Site 121 805 ft² approx
- Site 122 805 ft² approx
- Site 123 866 ft² approx
- Site 124 847 ft² approx
- Site 125 866 ft² approx
- Site 126 847 ft² approx

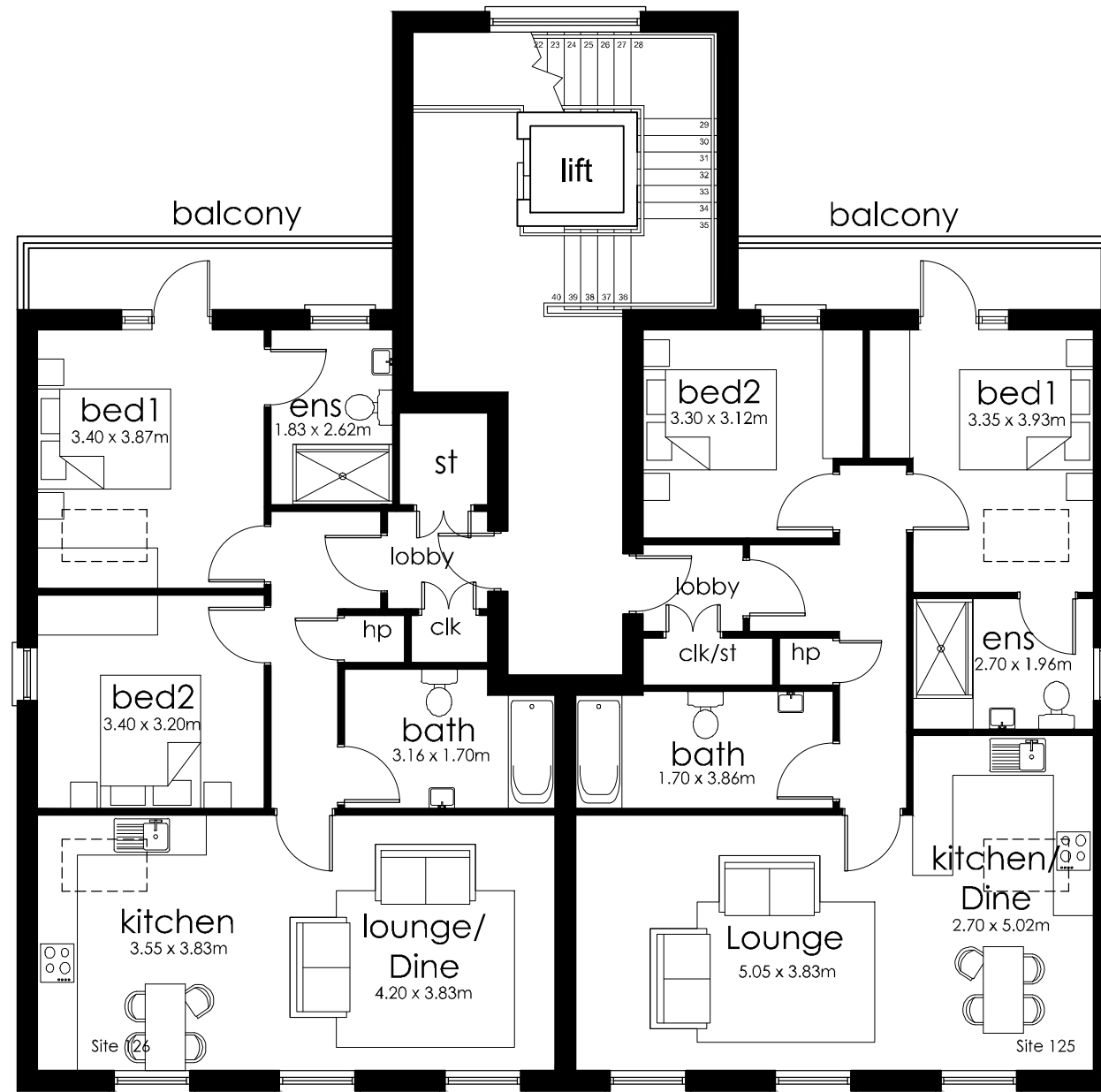
Pied a Terre Homes
Site no's 121-126



First Floor Plan

- Site 121 805 ft² approx
- Site 122 805 ft² approx
- Site 123 866 ft² approx
- Site 124 847 ft² approx
- Site 125 866 ft² approx
- Site 126 847 ft² approx

Pied a Terre Homes
Site no's 121-126



Second Floor Plan

Double height ceilings to Kitchen / Lounge / Dining areas.
Loft storage above other areas

- Site 121 805 ft² approx
- Site 122 805 ft² approx
- Site 123 866 ft² approx
- Site 124 847 ft² approx
- Site 125 866 ft² approx
- Site 126 847 ft² approx

Pied a Terre Homes
Site no's 121-126



Front elevation



Side elevation

Pied a Terre Homes
Site no's 121-126



Rear elevation



Side elevation

Pied a Terre Homes
Site no's 121-126